

Marching Men Hanging



smee
DESIGNS
© 2006

SIZE: 11½in x 13in

COLOURS:

 Green – 11 x 13in	 Yellow – 6 x 3in
 Red – Fat Q or 10cm	 White – 13 x 6in
 Black – 5 x 9in	 Skin tone – 5 x 3in
 Optional Dark Blue Binding (can also be Red) – Fat Q or 10cm	

OTHER:

Fusible Webbing – A3 size
Batting – 15 x 13 inches (40 x 33cm)
Backing Fab (incl. sleeve) – 45 x 40cm
Assorted Embroidery threads
General Sewing supplies

smee
DESIGNS

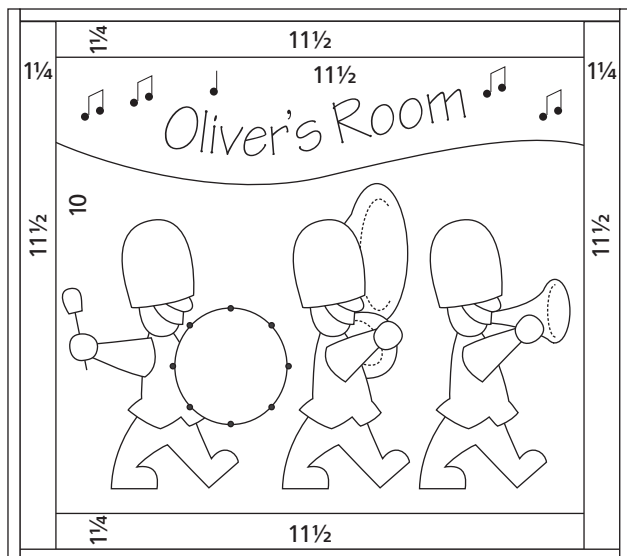
www.smeedesigns.com

40 Larnook Cres, Aspendale Vic 3195, Australia
smeedesigns@optusnet.com.au

Instructions

Cutting

1. Refer to the diagram below. The background and border fabric measurements include the 1/4 inch seam allowance. Cut your fabrics to the measurements stated below.



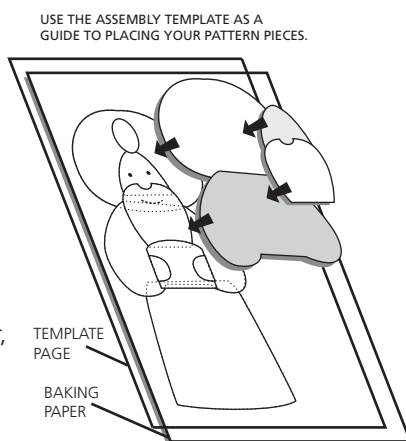
Bindings: Horizontal: 2 x 13 inches, Vertical: 2 x 13 inches
(Includes extra for trimming)

Applique (The fun bit!)

1. Trace the pre-reversed pattern shapes onto the paper side of the fusible webbing. To keep track of shapes, number each shape to match the pattern. Cut out each shape roughly, leaving a small margin around the traced line.
2. Using a dry moderately hot iron, iron the fusible webbing paper side up onto the **wrong** side of the appropriate fabric.
3. When cooled, cut out the shapes accurately on the traced line and remove the backing paper.
4. Assemble shapes in place and iron. OR...

Because the pattern pieces can be a bit tricky to get into place all at one time, I sometimes use the following technique to assemble my shapes:

- a) Place the pattern template on an ironing board, and cover it with baking paper. The baking paper will allow you to **lightly** iron and assemble the shapes piece by piece, without the fusible webbing adhering permanently to the baking paper.
- b) Once the item is complete let the material cool, then peel the item gently off the baking paper, and position on the background fabric. Iron thoroughly.



Stitching

1. Blanket stitch each fabric shape with two strands of embroidery thread. Use thread colours that are slightly darker than the material for better contrast and shape definition.
2. It's a good idea to 'anchor' the blanket stitches on sharp corners. After finishing a blanket stitch at a point, re-insert the needle on the outside of the stitch and bring the needle back up on the inside of the stitch before continuing. Anchoring prevents the blanket stitches from rolling away from the fabric edge.
3. Back stitch lines are marked on the assembly template.

Name Panel

1. Using the provided alphabet and dotted line, practice required lettering with a pencil until you're happy with the placement. Then write the lettering in dark pen on the paper so it is easy to trace.
2. Using a light source and pencil, trace the lettering on to the name panel **before** ironing on to centre panel.
3. Iron name panel on to centre panel.
4. Stitch the lettering in either dark blue, black or red with two strands of embroidery thread. Put a french knot at the end of each line, as shown in the sample. Stitch in notes as shown in sample if the name is short.
5. Blanket stitch the curved edge with matching thread.

Border Panels

1. Cut out the borders to sizes shown in the diagram. Sew on to the centre piece using a 1/4 inch seam. Sew the horizontal borders first, and then the vertical.

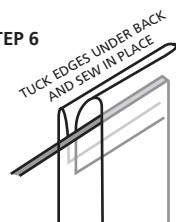
Quilting

1. Cut out the backing fabric and wadding slightly larger than the top.
2. Place the backing fabric wrong side up on a flat surface, then place the wadding and quilt top (right side up) on top of it. Pin fabric and wadding together in 3-4 inch intervals. I use an embroidery hoop to keep the fabric from moving around too much, but this is not always necessary on smaller projects.
3. Quilt around the figures and ditches.

Binding

1. Cut 2 inch wide strips of blue material to required length.
2. Fold in half lengthways (wrong side to wrong side) and iron flat. Start with the horizontal bindings.
3. Match the raw edge of the binding strip to the raw edge of the border panel. Sew with a quarter inch seam.
4. Trim all three layers to the raw edge using a rotary cutter.
5. Fold over material to back, and slip stitch in place.
6. Repeat steps 1-5 with the vertical bindings, but tuck in the ends to the back and sew in place.

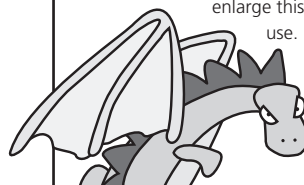
STEP 6



Sleeve for wall hanging:

1. Cut an extra piece of the border material to 2 x 9 inches.
2. Hem the short ends with a quarter inch seam or less.
3. Fold the material in half along the length, right sides together, and sew along the raw edge with a quarter inch seam.
4. Turn material right side out, iron flat and attach with slip stitch to the back of the quilt, making sure the top of the sleeve does not show over the top of backing fabric.

Grumpy Dragon Alert! Duncan is happy for you to photocopy and enlarge this pattern as much as you like for your own use. However, he gets very upset and grumpy if you distribute it freely amongst your friends. Please respect copyright laws so that we can afford to keep designing patterns, and Duncan doesn't feel the need to bite people quite so often. Thanks very much!



Marching Men Template

Suggested colours:

Black: 1 (x3), 6 (x3), 7

White: 9

Red: 4 (x3), 5(x3)

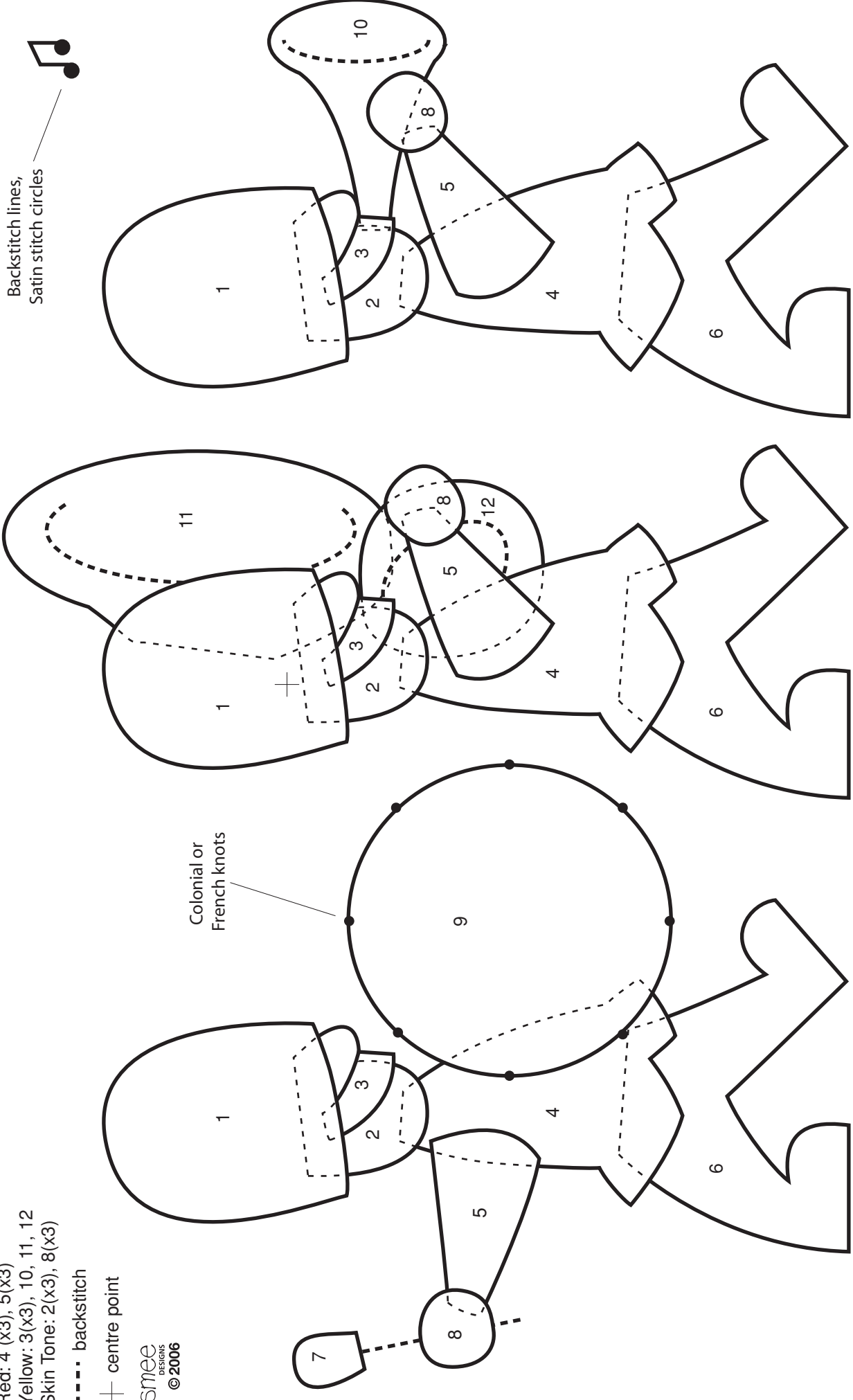
Yellow: 3(x3), 10, 11, 12

Skin Tone: 2(x3), 8(x3)

---- backstitch

+ centre point

smee
DESIGNS
© 2006



Marching Men Pieces

Suggested colours:

Black: 1, 6, 7

White: 9

Red: 4, 5, 9

Yellow: 3, 10, 11, 12

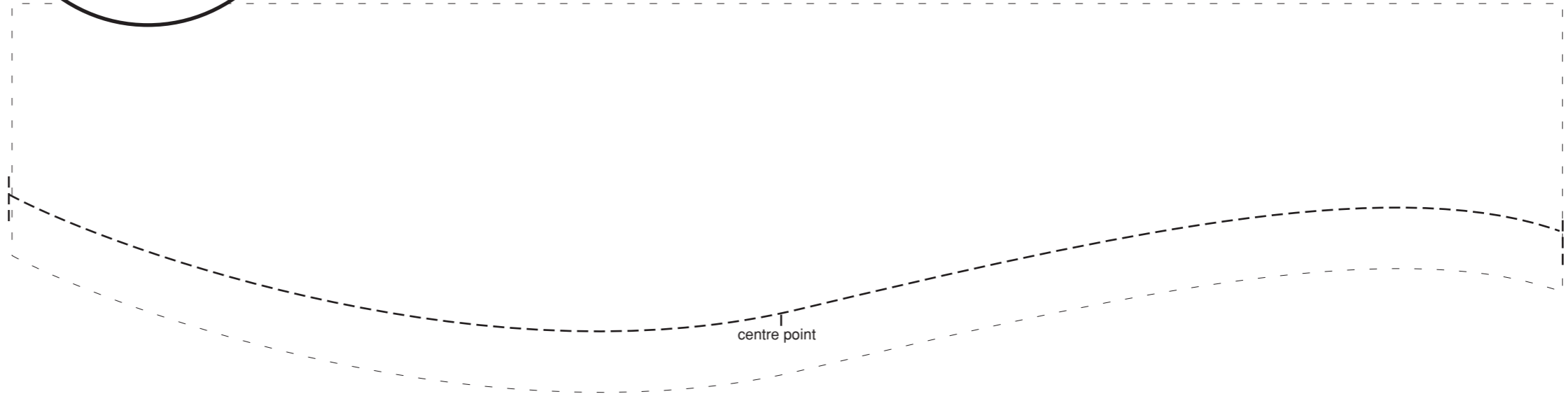
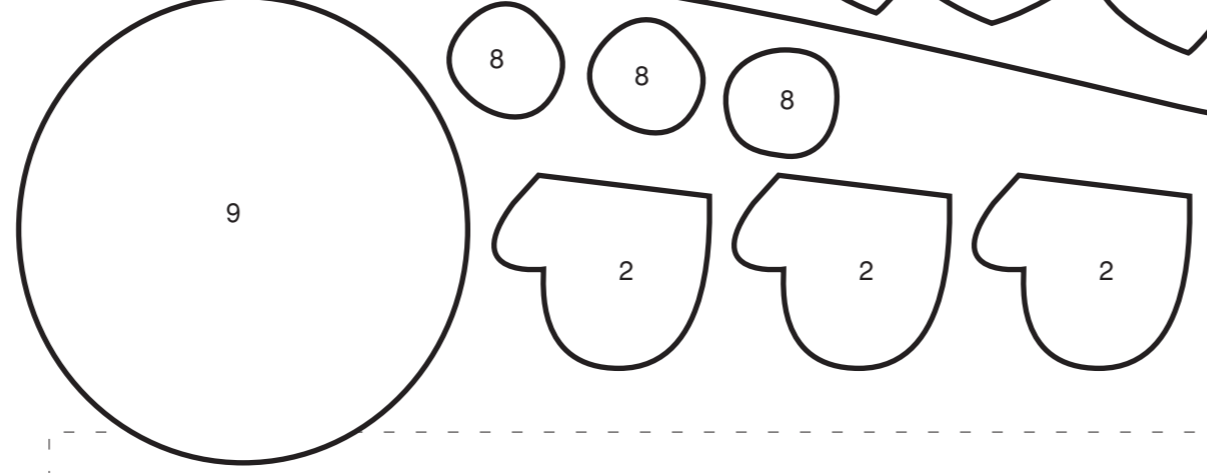
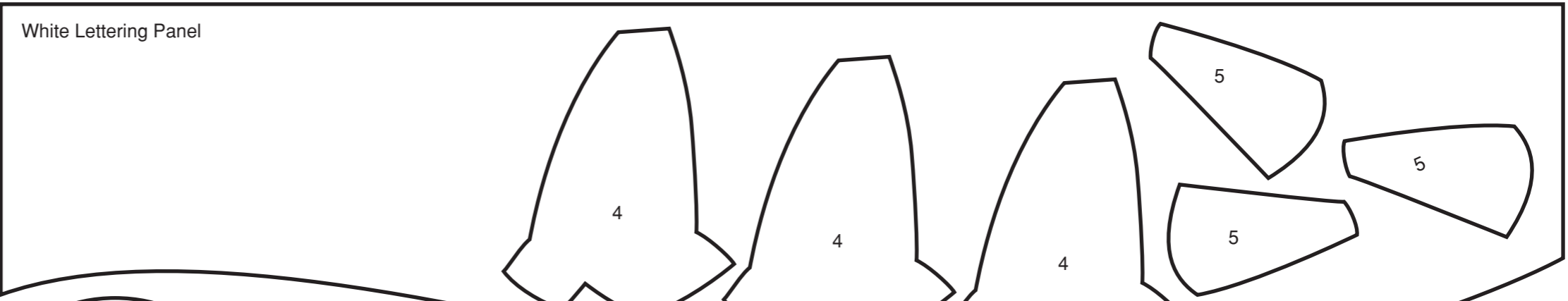
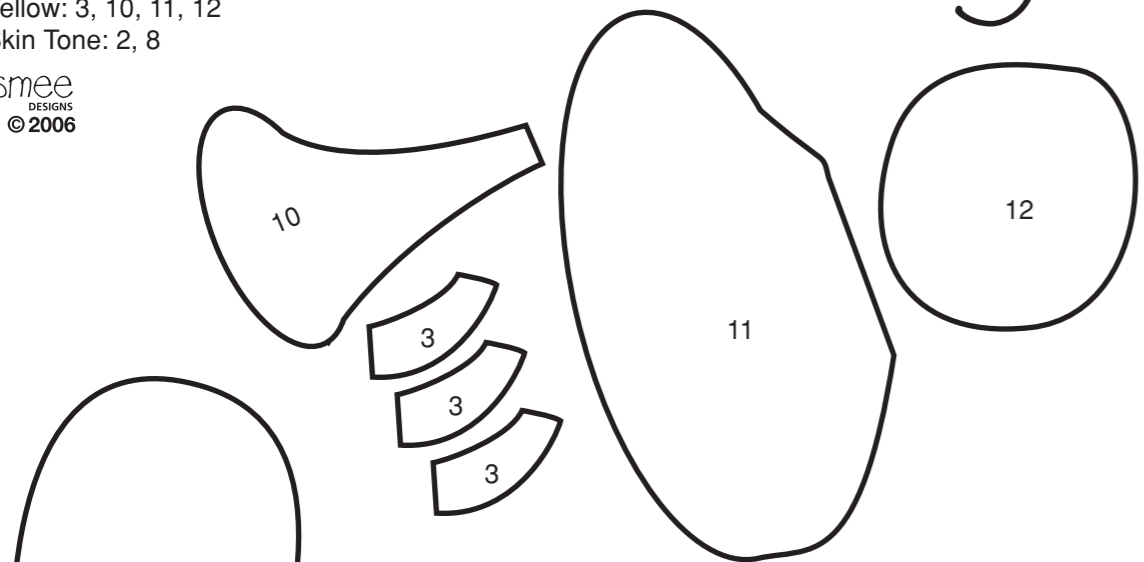
Skin Tone: 2, 8

sme
DESIGNS
© 2006

abcdefghijklmnopqrstuvwxyz

ABCDEFGHIJKLM

NOPQRSTUVWXYZ



Write in your lettering along this dotted line in dark pen.
(Cut the area out so you can trace the lettering from the above alphabet if you need to.) Place under fabric and trace lightly with a pencil at least half an inch up from the curved edge before ironing onto the back panel.